

Appendix D

Visual Simulations

County Road 23 | Gorham

Viewpoint Information

Viewpoint ID: 6
 County: Fulton County
 Township: Gorham
 Location: County Road 23
 Latitude, Longitude: 41.6772° N, 84.3079° W
 Direction of View: East
 Distance to Project: 0.3 mile
 Distance Zone: Near-Foreground

Photograph Information

Date Taken: March 05, 2020
 Time: 3:09 PM
 Camera: Nikon D7100
 Resolution: 21 Megapixels
 Lens Focal Length: 35 mm (52 mm)
 Camera Elevation: 777 feet
 Field of View: 36.6 degrees

Project Information:

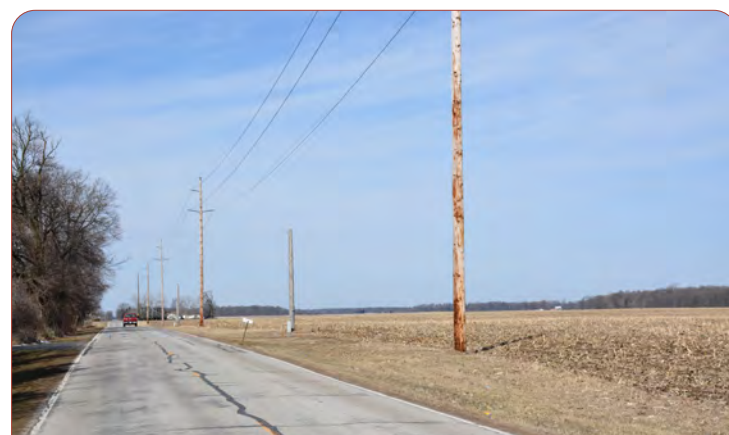
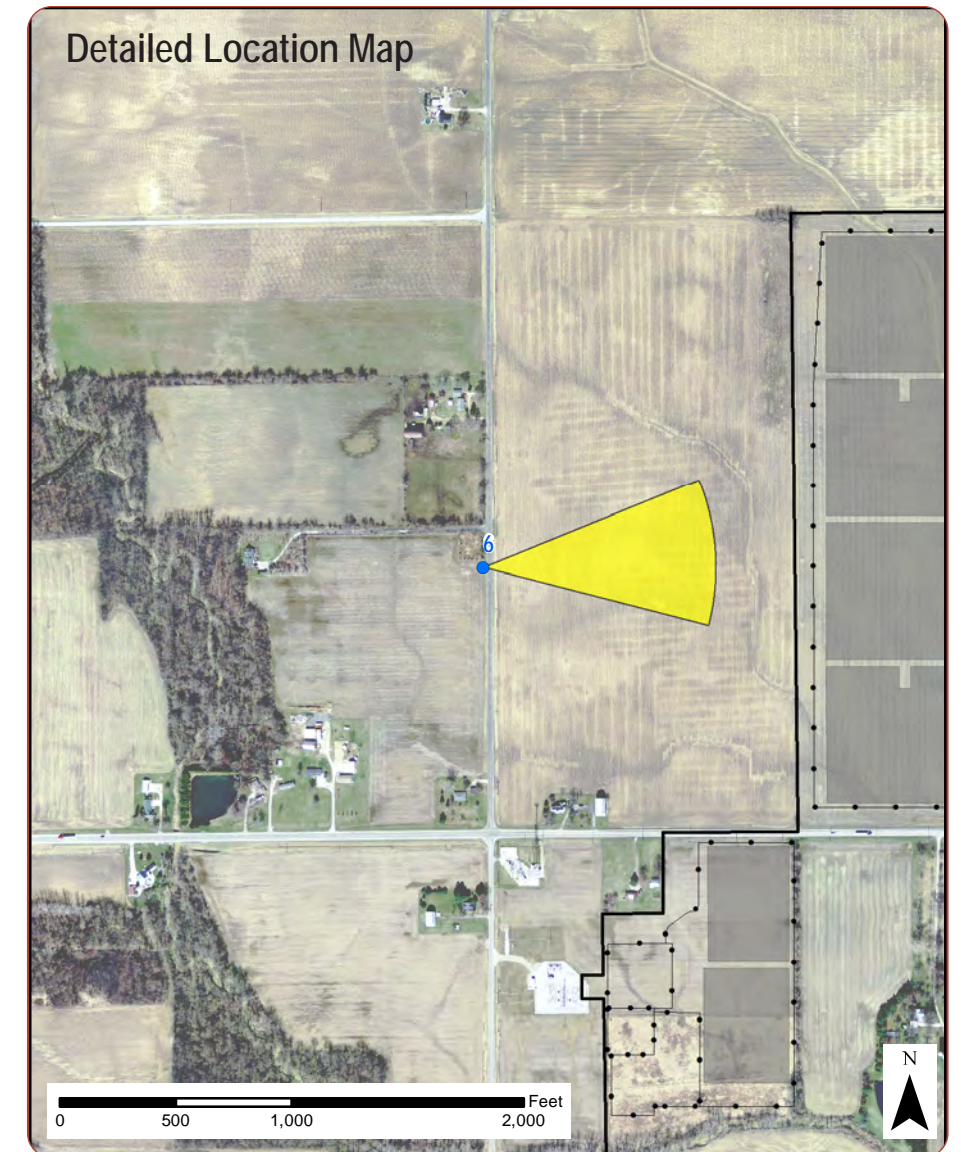
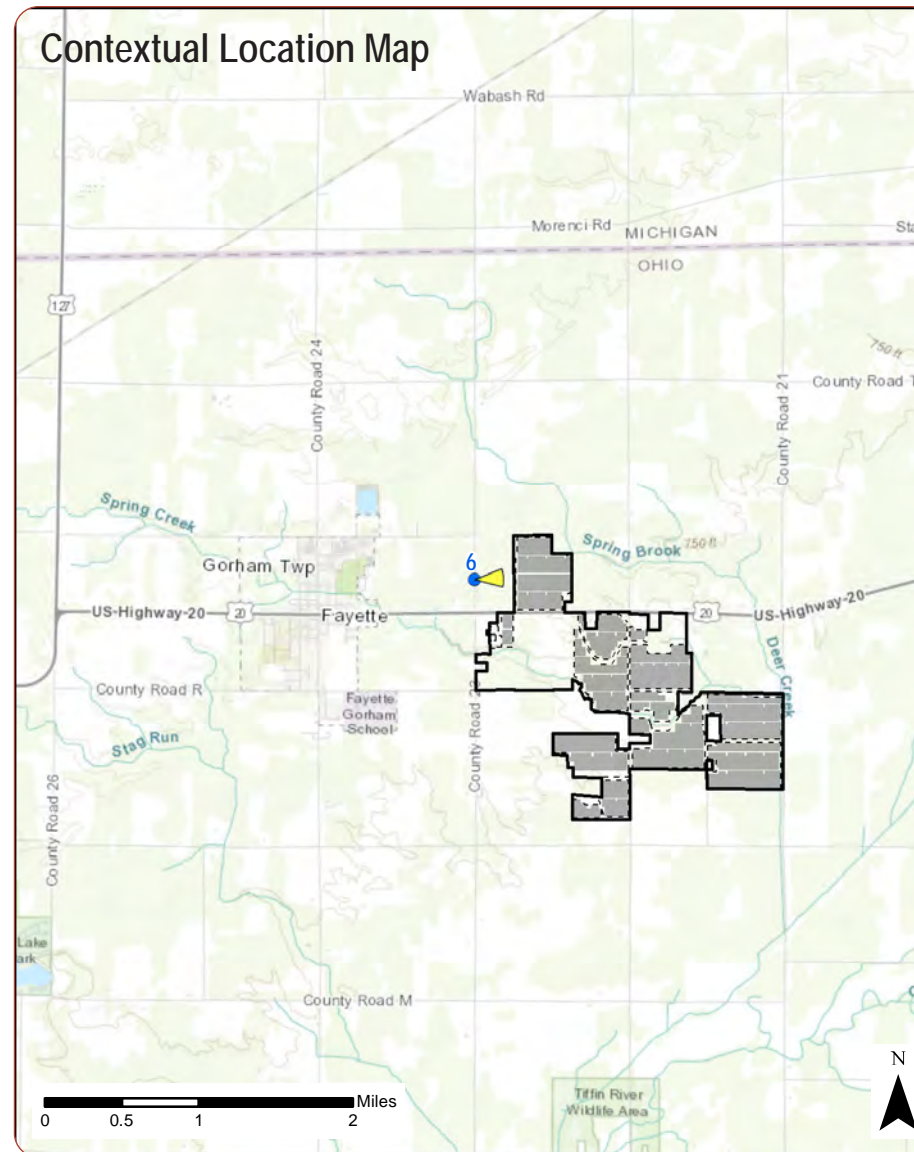
Racking Type: Single Axis Tracker
 Max Panel Height From Ground: 14 feet
 Project Site: 1,010 acres
 Facility Area: 650 acres

Visual Resources

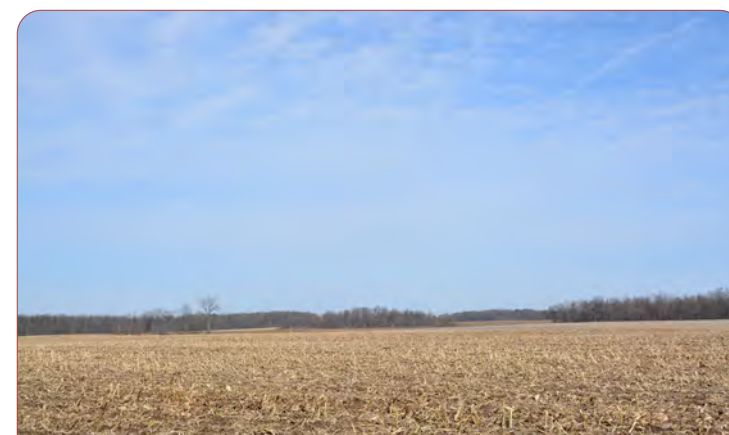
Landscape Type:
 User Group: Local Residents
 VSR: NA

Viewing Instructions:

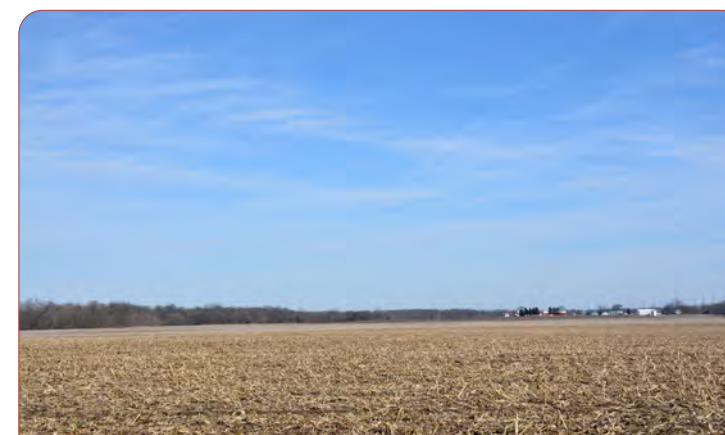
Printed at 100% the resulting simulation size is 15 inches wide by 10 inches high. At this size and focal length, the simulation should be viewed from a distance 23 inches.



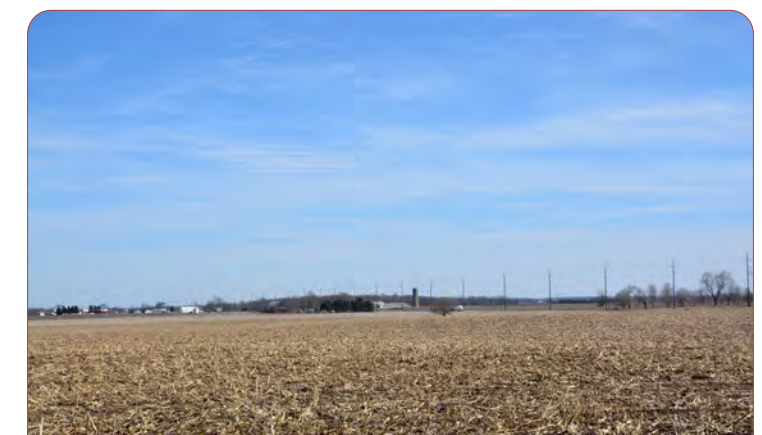
Context Photo: View to the west-northwest



Context Photo: View to the northwest

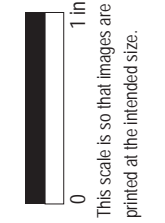


Simulation Photo: View to the east

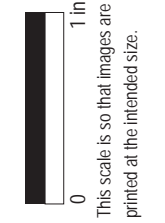


Context Photo: View to the east-southeast

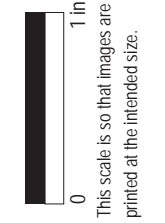
Existing Conditions



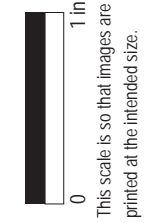
Visual Simulation



Visual Simulation - Mitigation Year 1



Visual Simulation - Mitigation Year 5-7



US Route 20 | Gorham

Viewpoint Information

Viewpoint ID: 10
 County: Fulton County
 Township: Gorham
 Location: US Route 20
 Latitude, Longitude: 41.6741° N, 84.2994° W
 Direction of View: East-northeast
 Distance to Project: 142 feet
 Distance Zone: Near-Foreground

Photograph Information

Date Taken: March 05, 2020
 Time: 3:27 PM
 Camera: Nikon D7100
 Resolution: 21 Megapixels
 Lens Focal Length: 38 mm (57mm)
 Camera Elevation: 758 feet
 Field of View: 35.0 degrees

Visual Resources

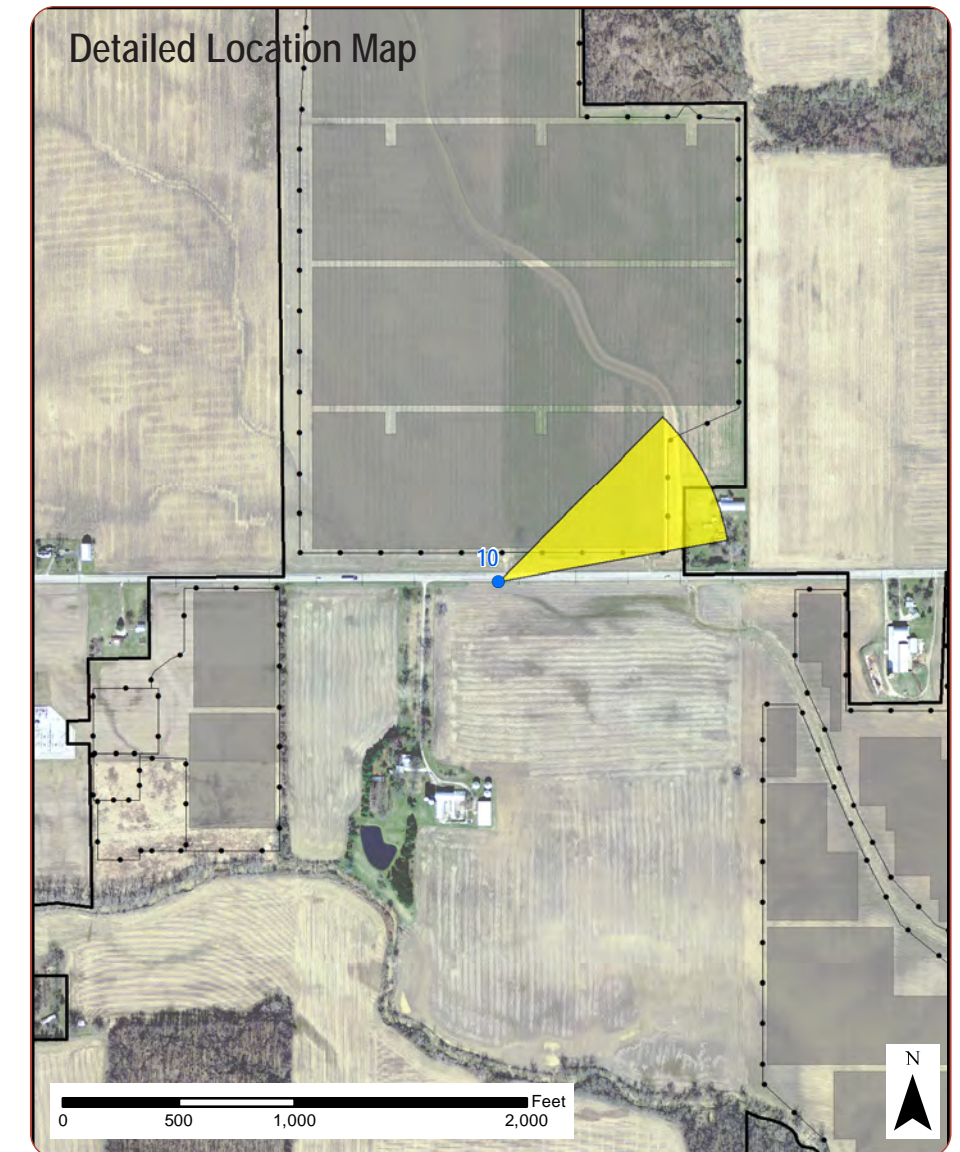
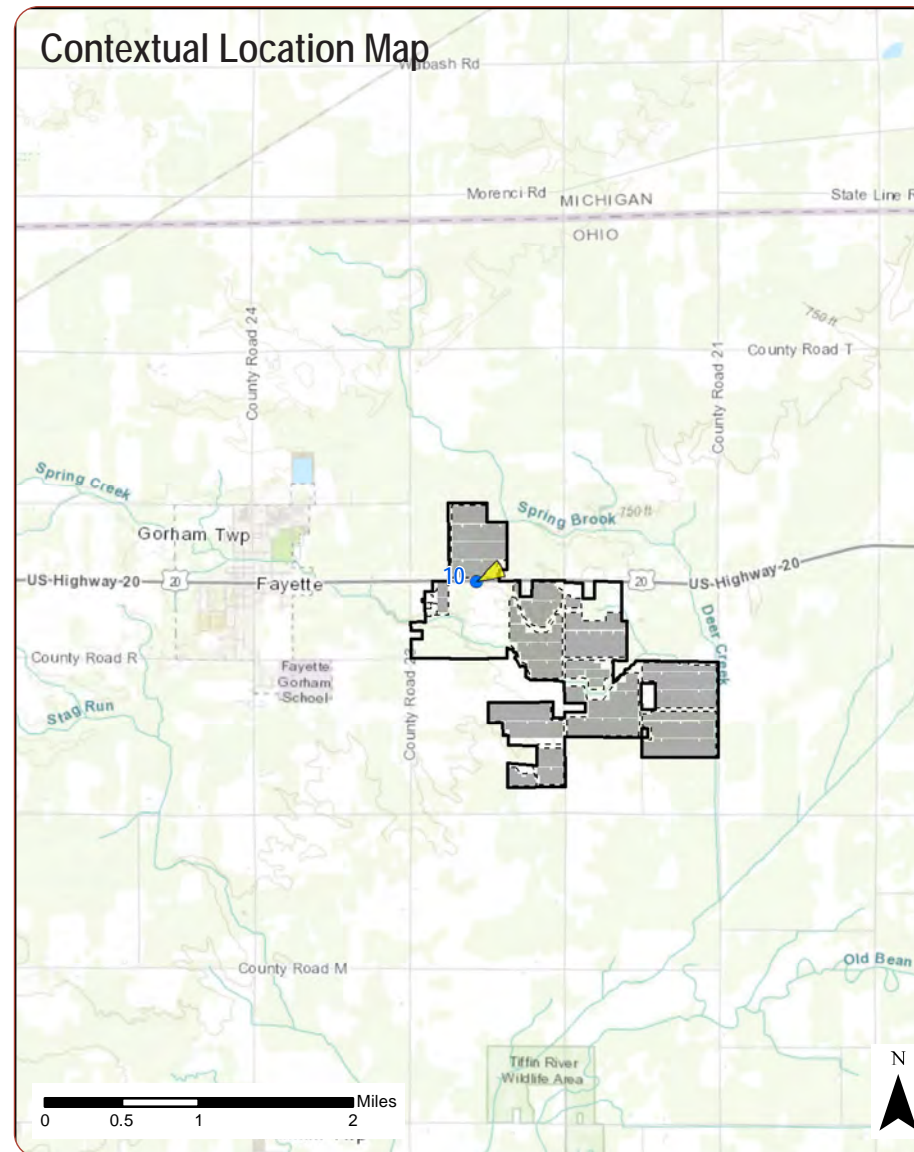
Landscape Type:
 User Group: Local Residents, Through Travelers/
 Commuters
 VSR: US Route 20

Project Information:

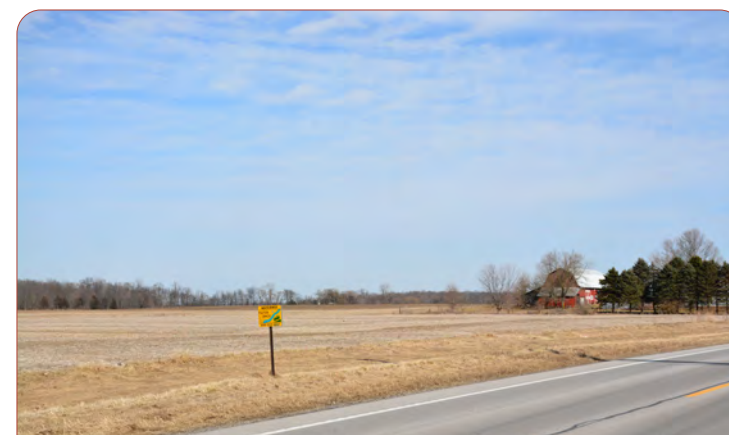
Racking Type: Single Axis Tracker
 Max Panel Height From Ground: 7.6 feet
 Project Site: 1,010 acres
 Project Area: 605 acres

Viewing Instructions:

Printed at 100% the resulting simulation size is 15 inches wide by 10 inches high. At this size and focal length, the simulation should be viewed from a distance 23 inches.



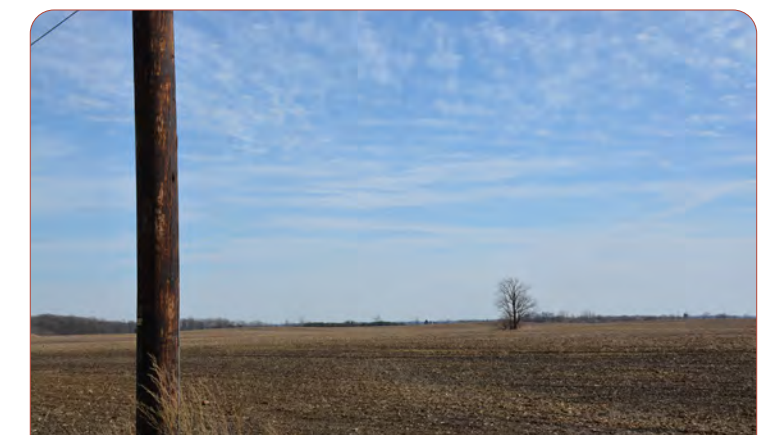
Context Photo: View to the north-northeast



Simulation Photo: View to the east-northeast



Context Photo: View to the east



Context Photo: View to the southeast

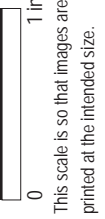
Existing Conditions



Visual Simulation



Visual Simulation - Mitigation Year 1



Visual Simulation - Mitigation Year 5-7



US Route 20 | Gorham

Viewpoint Information

Viewpoint ID: 13
 County: Fulton
 Township: Gorham
 Location: Intersection of US Route 20 and County Road 22
 Latitude, Longitude: 41.6742° N, 84.2884° W
 Direction of View: West
 Distance to Project: 309 feet
 Distance Zone: Near-Foreground

Visual Resources

Landscape Type:
 User Group: Local Residents, Through Travelers/ Commuters
 VSR: US Route 20

Photograph Information

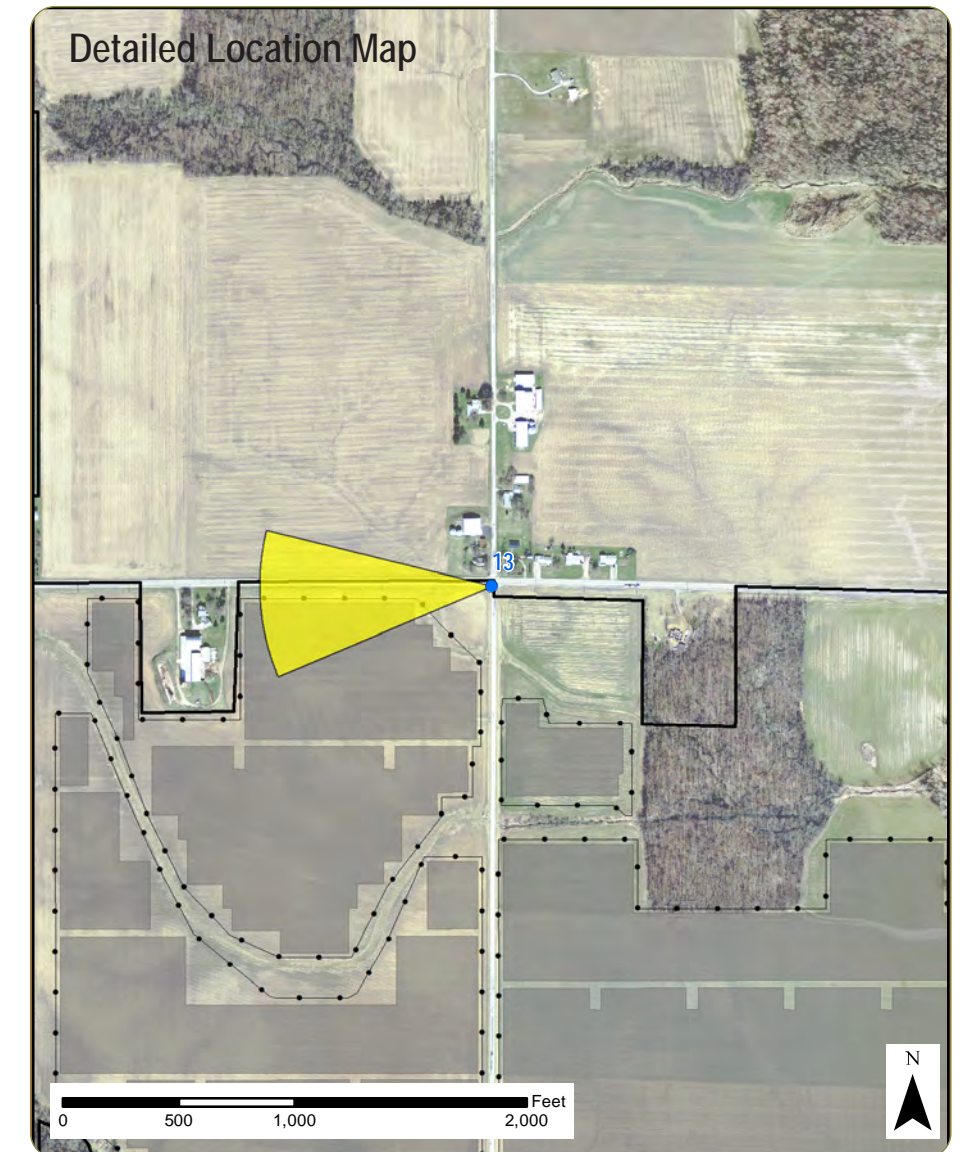
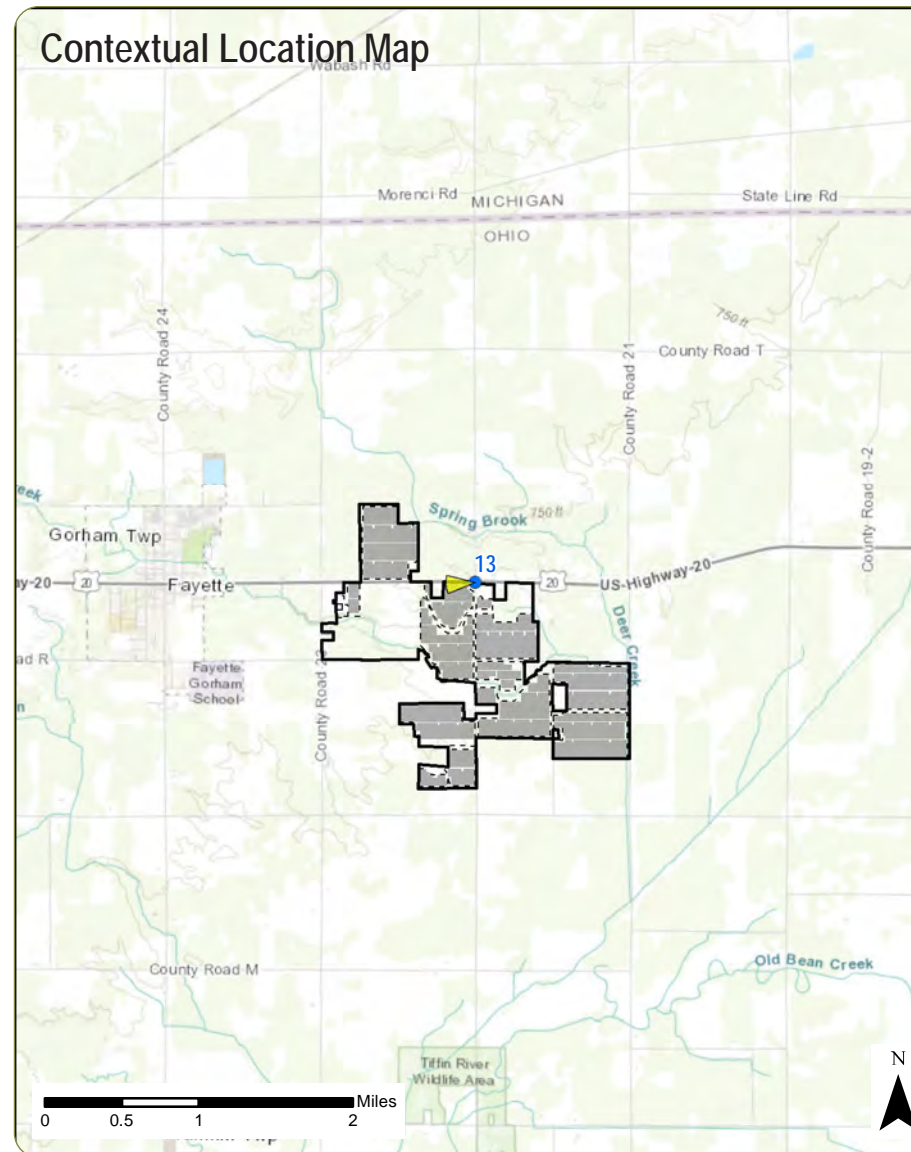
Date Taken: March 05, 2020
 Time: 3:49 PM
 Camera: Nikon D7100
 Resolution: 21 Megapixels
 Lens Focal Length: 35 mm (52 mm)
 Camera Elevation: 758 feet
 Field of View: 36.6 degrees

Project Information:

Racking Type: Single Axis Tracker
 Max Panel Height From Ground: 7.6 feet
 Project Site: 1,010 acres
 Project Area: 605 acres

Viewing Instructions:

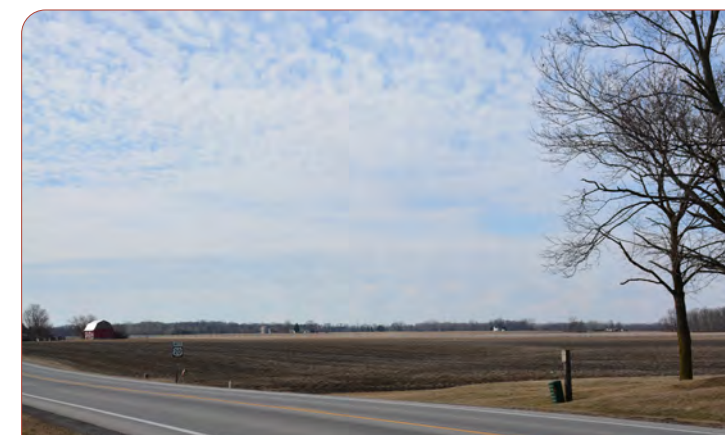
Printed at 100% the resulting simulation size is 15 inches wide by 10 inches high. At this size and focal length, the simulation should be viewed from a distance 23 inches.



Context Photo: View to the southwest



Simulation Photo: View to the west

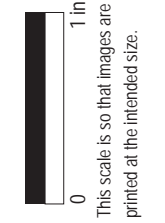


Context Photo: View to the west-northwest



Context Photo: View to the northwest

Existing Conditions



Visual Simulation



Visual Simulation - Mitigation Year 1



0 1 in
This scale is so that images are
printed at the intended size.

Visual Simulation - Mitigation Year 5-7



County Road 23 | Gorham

Viewpoint Information

Viewpoint ID: 44
 County: Fulton
 Township: Gorham
 Location: County Road 23
 Latitude, Longitude: 41.6707° N, 84.3076° W
 Direction of View: Northeast
 Distance to Project: 0.2 mile
 Distance Zone: Near-Foreground

Photograph Information

Date Taken: March 05, 2020
 Time: 5:23 PM
 Camera: Nikon D7100
 Resolution: 21 Megapixels
 Lens Focal Length: 35 mm (52 mm)
 Camera Elevation: 759 feet
 Field of View: 38.1 degrees

Project Information:

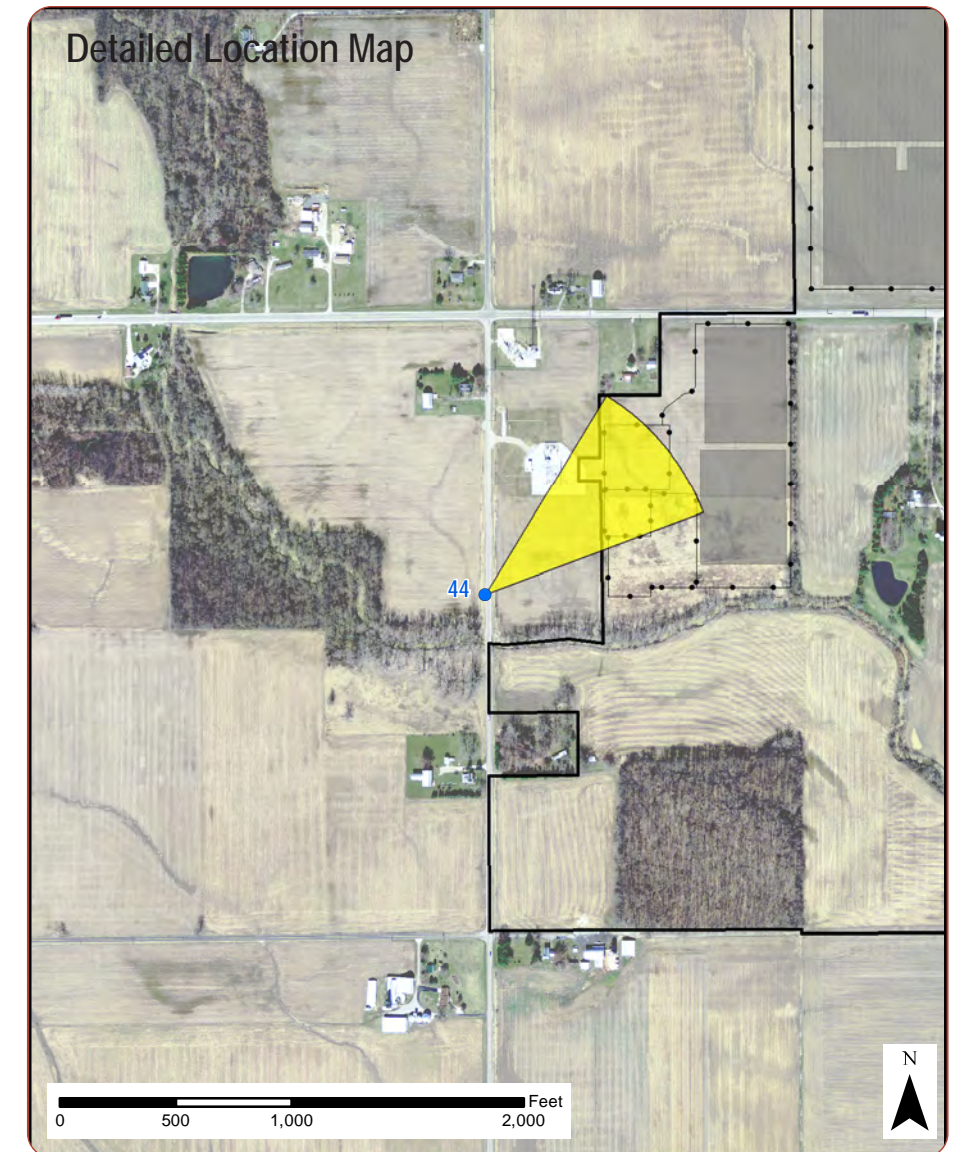
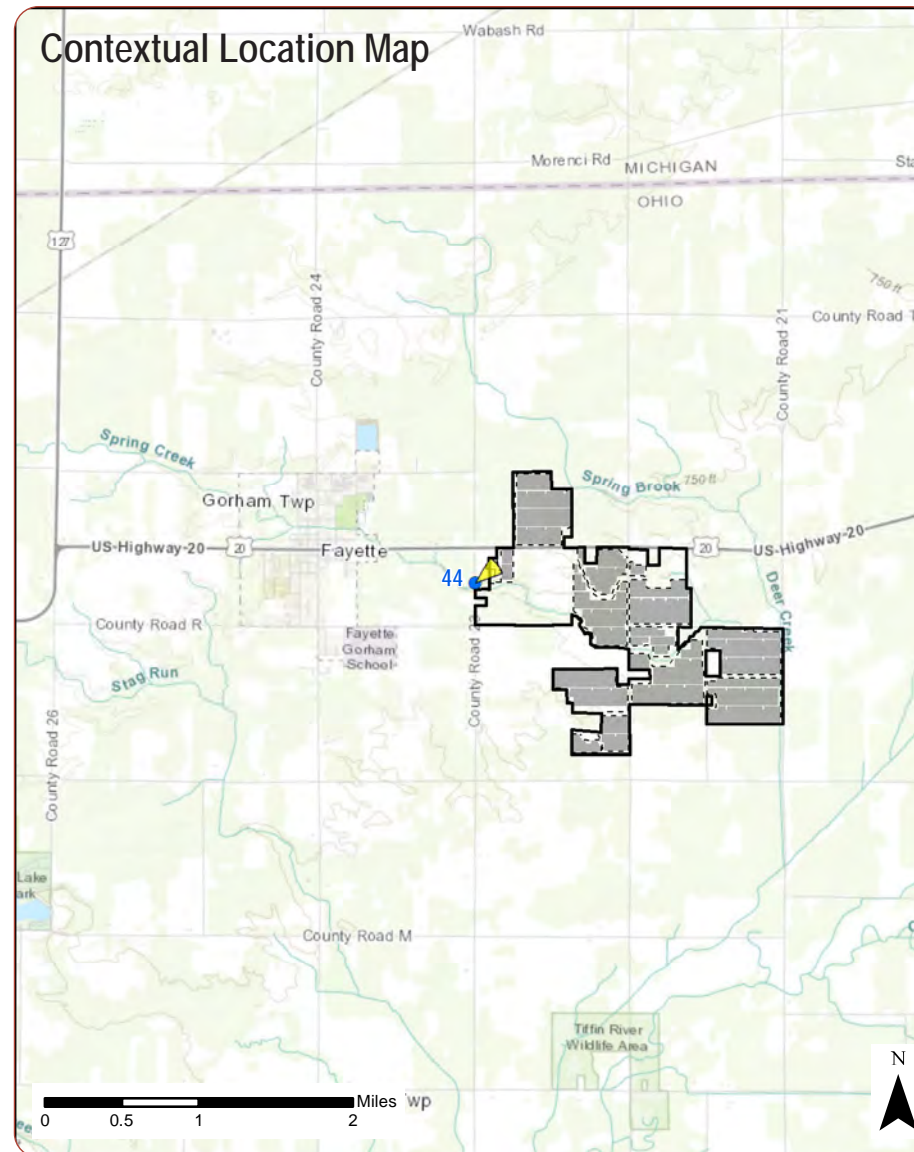
Racking Type: Single Axis Tracker
 Max Panel Height From Ground: 7.6 feet
 Project Site: 1,010 acres
 Project Area: 605 acres

Visual Resources

Landscape Type:
 User Group: Local Residents
 VSR: NA

Viewing Instructions:

Printed at 100% the resulting simulation size is 15 inches wide by 10 inches high. At this size and focal length, the simulation should be viewed from a distance 23 inches.



Context Photo: View to the north-northeast



Simulation Photo: View to the northeast

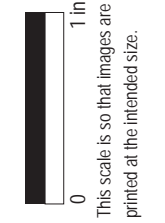


Context Photo: View to the east

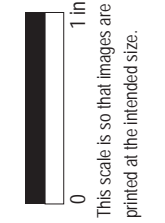


Context Photo: View to the southeast

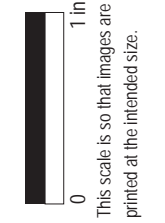
Existing Conditions



Visual Simulation



Visual Simulation - Mitigation Year 1



Visual Simulation - Mitigation Year 5-7

